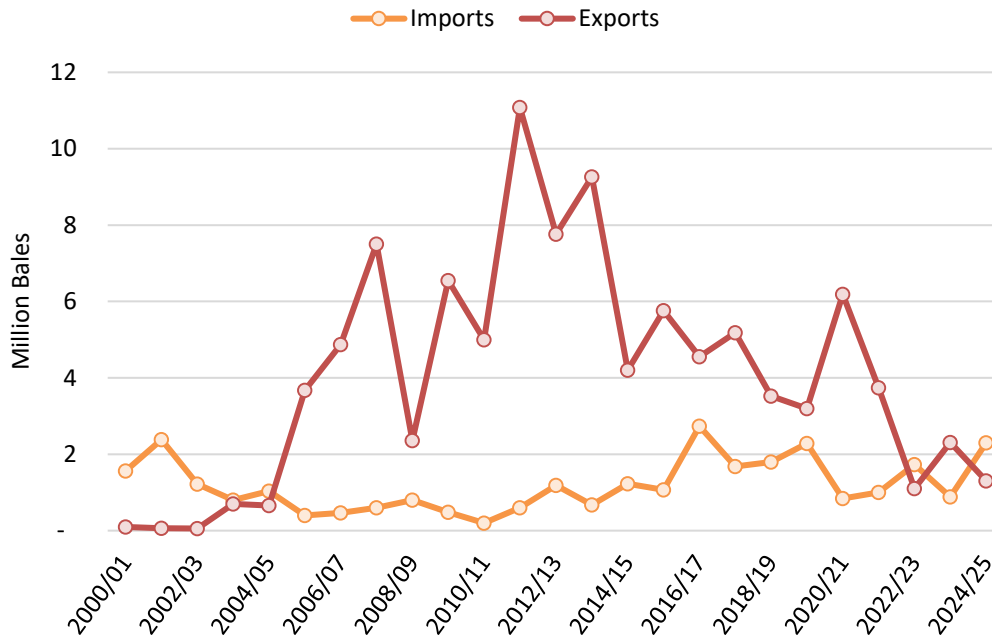


Cotton: World Markets and Trade

India Cotton Imports Forecast at 8-Year High

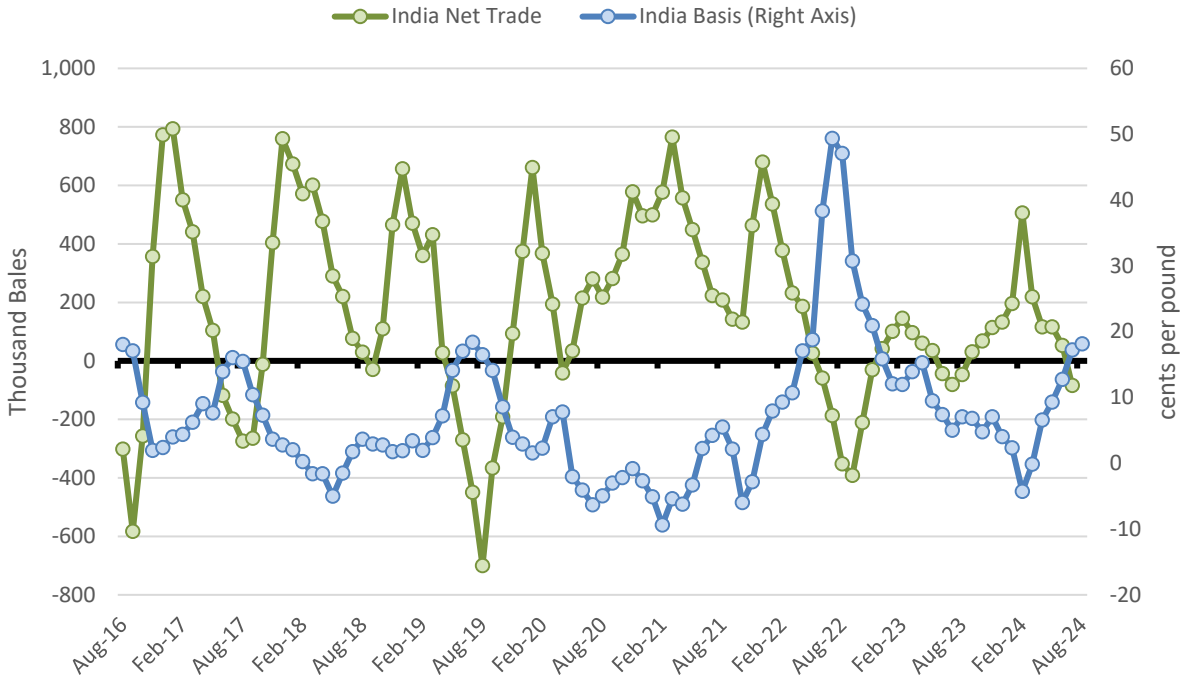


India is projected to be a net cotton importer for only the second time in 20 years. Cotton imports are forecast at 2.3 million bales for marketing year 2024/25 (August 2024 – July 2025), nearly triple the previous year’s volume, while exports are projected down 1.0 million bales to 1.3 million. Imports are projected up on lower production, increased mill use, and relatively high domestic prices. Importers are also expected to benefit from the removal of the tariff on extra-long staple (ELS) cotton this past February.

India cotton exports are forecast down on lower exportable supplies and high prices. Production is forecast down 7 percent to 24.0 million in 2024/25, the lowest level in 15 years, and beginning stocks are also down slightly year over year. Lower production is driven by a decline in area harvested after a heat wave in Northern India limited planting and farmers switched to more profitable crops. While the government raised the minimum support price (MSP) for seed cotton by 7 percent, wholesale prices of other crops saw greater gains and led farmers to opt to plant rice and pulses.¹ Despite lower production, mill use is projected up 500,000 bales to 25.5 million, the highest level in 4 years, further limiting exportable supplies. As global cotton prices have been falling, a higher MSP limits the competitiveness of exports relative to major competitors and reduces the incentive to export.

¹ The MSP for 2024/25 is INR 7,121 per 100 kilograms of medium staple cotton and INR 7,521 per 100 kilograms of long staple cotton. The MSP applies to seed cotton, not cotton lint. For more information see the [India Cotton and Products Update – June 2024](#) from FAS Mumbai.

India's Net Cotton Exports Fall with Rising Basis



Note: India Basis is the monthly average of the following calculation: India’s spot price – the Intercontinental Commodity Exchange (ICE) futures contract. India Net Trade is the monthly volume of India’s cotton exports – imports.

Ahead of 2024/25 new crop arrivals, prices for domestic cotton lint have been around 87 cents per pound in recent months with India’s basis approaching 20 cents per pound, incentivizing domestic mills to increase imports.² Since the marketing year began in August, U.S. Export Sales Reporting shows total commitments of U.S. cotton to India nearly six times larger than last year and double the level seen 2 years ago when India was a net importer. This marketing year’s increase is driven primarily by higher commitments for Upland cotton showing the broad nature of the demand for cotton this year to supplement domestic supplies on top of the consistent demand for ELS cotton that usually makes up most of U.S. exports to India. Similarly, Brazil exports to India in August and September 2024 are nearly double the quantity of cotton shipped in all of 2023/24. As the 2024/25 crop enters the market this month, imported supplies will likely remain an attractive option compared with domestic supplies, even when accounting for tariffs.

India Upland Cotton Tariffs by Country of Origin

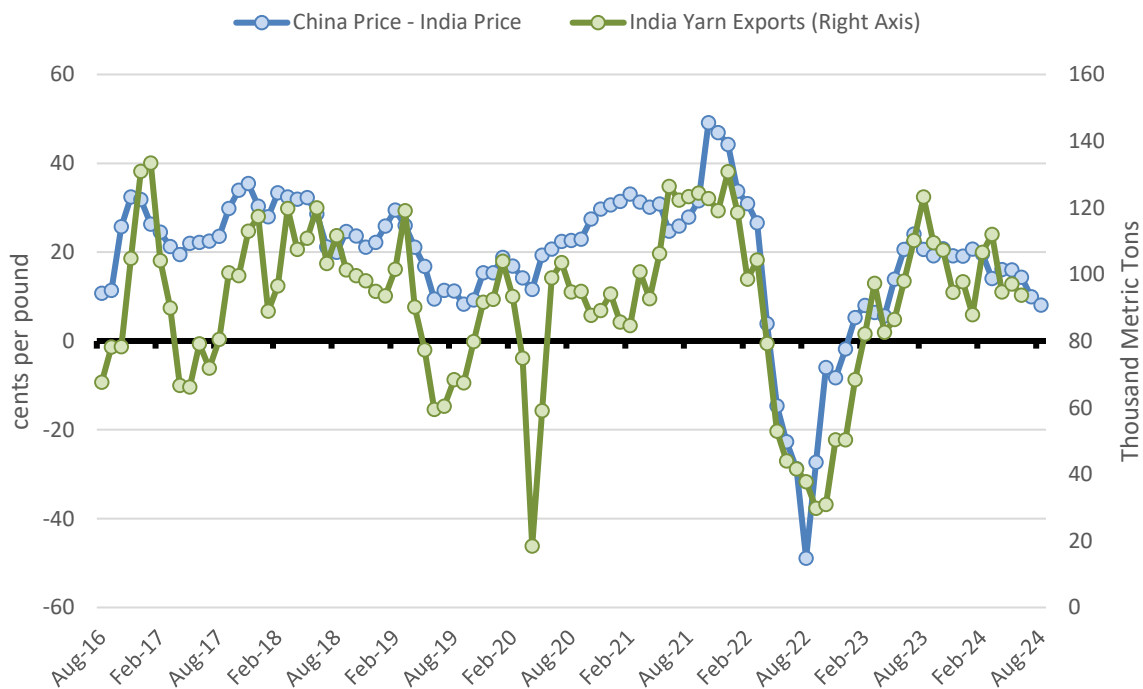
Country of Origin	Tariff
All origins excluding Least Developed Countries (LDCs)	11%
Australia	duty-free tariff rate quota (TRQ) of approximately 230,000 bales; 11% above TRQ
LDCs	5.5%

² India’s basis is the difference between the spot price in India and the Intercontinental Commodity Exchange (ICE) futures contract.

Note: Tariffs for HS code 52010024. For Australia, all origins excluding LDCs assumes imported quantities outside the duty-free quota. ELS cotton with a staple length exceeding 32.0 mm (HS code 52010025) has been allowed to enter India duty free from all origins since February 20, 2024.

Most cotton textiles and products produced in India are consumed domestically, but the industry is still reliant on demand for cotton yarn from Bangladesh and China and demand for cotton products from the United States and Europe. Historically, India yarn exports have fallen as domestic prices rose relative to China spot prices (China is the world’s largest cotton yarn importer). If India’s basis remains elevated, cotton yarn exports are expected to fall and thus 2024/25 cotton consumption. Nonetheless, cotton lint imports are expected to exceed exports in response to continued strong domestic demand.

India Cotton Yarn Exports Fall with Stronger India Cotton Prices



2024/25 Outlook

Production is forecast up more than 200,000 bales to 116.6 million on higher yields in China and Brazil more than offsetting a reduction in the United States. U.S. production is lowered 300,000 bales due to damage from Hurricane Helene in North Carolina and Georgia lowering yields. Global consumption is unchanged at 115.7 million as higher use in Bangladesh offsets lower use in the United States. U.S. consumption is forecast at 1.8 million bales, slightly below the 2023/24 level and the lowest level since 1884, as U.S. mill activity continues to be shifted to Central America.

Global trade is projected down more than 500,000 bales to 42.5 million. Brazil exports are lowered 200,000 bales, and U.S. exports are lowered 300,000. China drives the fall in imports with a 500,000-bale reduction. Global beginning stocks are estimated down more than 400,000 bales on increased China consumption in 2023/24. Global ending stocks are forecast down nearly 200,000 bales to 76.3 million as lower China stocks more than offset higher U.S. and Brazil stocks.

The U.S. season-average farm price for 2024/25 remains at 66 cents per pound.

2024/25 Trade Outlook (1,000 480-lb Bales)

Major Importers:

	Previous	Current	Change	Reason
<u>WORLD</u>	42,989	42,476	-513	
China	9,500	9,000	-500	Higher production

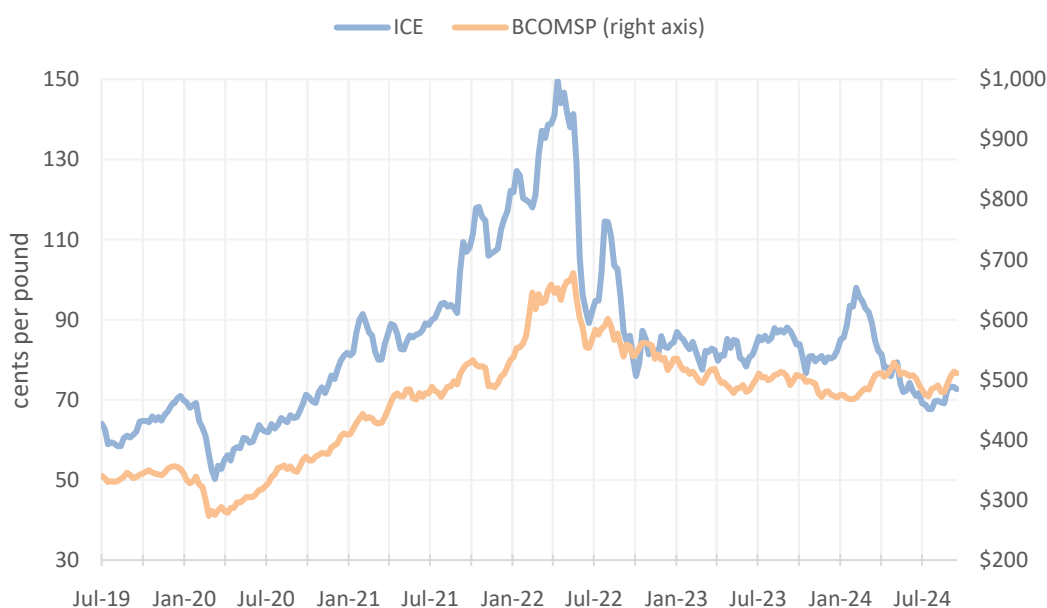
Major Exporters:

	Previous	Current	Change	Reason
<u>WORLD</u>	42,991	42,471	-520	
United States	11,800	11,500	-300	Lower production
Brazil	12,500	12,300	-200	Less global demand

Futures and Spot Prices

Since the last WASDE report, cotton futures on the Intercontinental Exchange (ICE) are up around 4 cents per pound to 72 cents on lower expected U.S. production. Crop conditions declined across the country as witnessed in the most recent [Crop Progress](#) report, and Hurricane Helene negatively affected areas in the Mid-South and Southeast. The latest Commodity Futures Trading Commission *Commitment of Traders* supplemental [report](#) for futures and options showed the net long position for both Non-Commercial and Index participants rising to over 36,000 contracts compared with a net short position last month. Nonetheless, this remains significantly below the level last year at over 105,000 contracts.

Weekly ICE Cotton Futures and Bloomberg Commodity Spot Index



Note: The Intercontinental Exchange nearby Cotton No.2 Futures contract is reflected and found [here](#). The Bloomberg Commodity Spot Index (BCOMSP) is listed [here](#). The index measures the price movements of futures contracts for various

commodities. It does not account for the effects of rolling futures contracts, or the costs associated with holding physical commodities and is quoted in USD.

Changes Since September WASDE (cents per pound)

	A-Index	U.S.	China	India	Brazil	Pakistan
9-Sep	79.4	61.8	94.7	90.7	70.4	79.9
9-Oct	84.0	66.1	100.2	84.5	71.1	79.5
Change	4.6	4.3	5.5	-6.2	0.7	-0.4

U.S. spot prices are up again to around 66 cents per pound on lower expected U.S. production. Southeast basis fell slightly to -450 basis points while North and South Delta fell to -600. West Texas-Kansas-Oklahoma is unchanged at -675, and average basis across the United States was also unchanged at around -600.

China prices are up more than 5 cents to 100 cents per pound as the nearby futures contract (January) on the Zhengzhou Commodity Exchange (ZCE) rose nearly 1,000 yuan per metric ton to around 14,200. Basis (relative to ICE) was up nearly 300 points to around 2,800 points and the same level as last year.

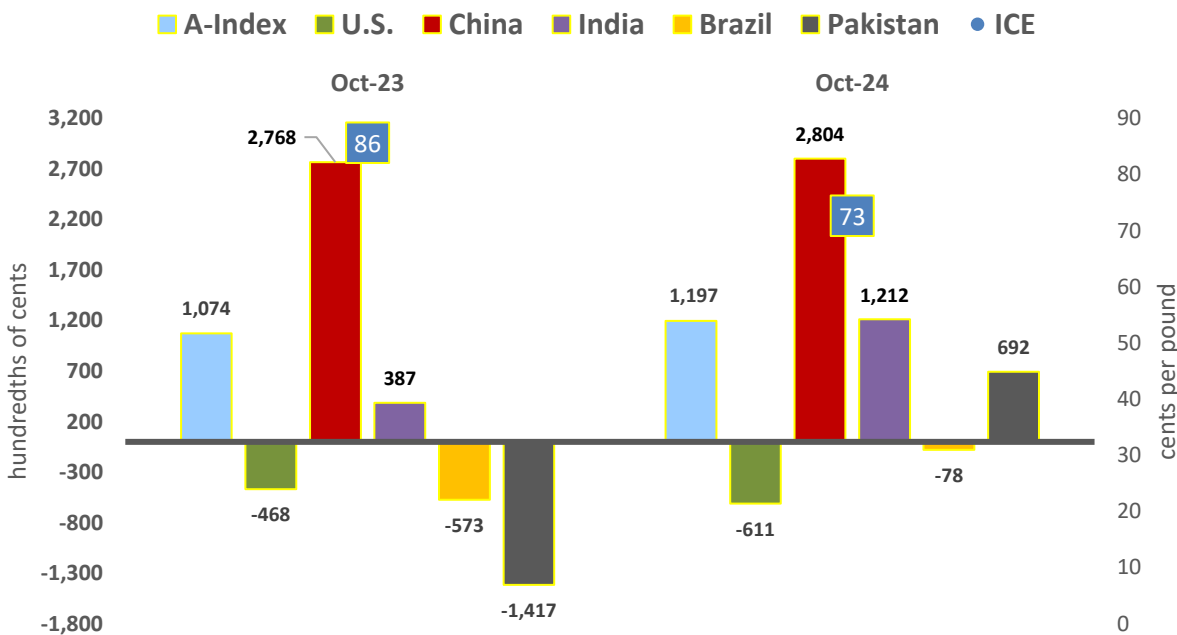
India prices are down 6 cents this month to 85 cents per pound and likely reflect a greater volume of transactions compared with recent months as the 2024/25 crop arrives. Basis fell over 900 points this month to around 1,200 points but remains well above the level of 400 witnessed last year.

Brazil prices were mostly unchanged at around 70 cents. Basis is down 200 points again this month but above last year's level of around -600 points. This is likely attributed to 2023/24 ending stocks falling nearly 1.0 million bales compared with the previous year to 3.1 million.

Pakistan prices are also unchanged at around 80 cents per pound. Basis is down over 400 points this month to around 700 points but dramatically higher than last year's level of -1,400 points.

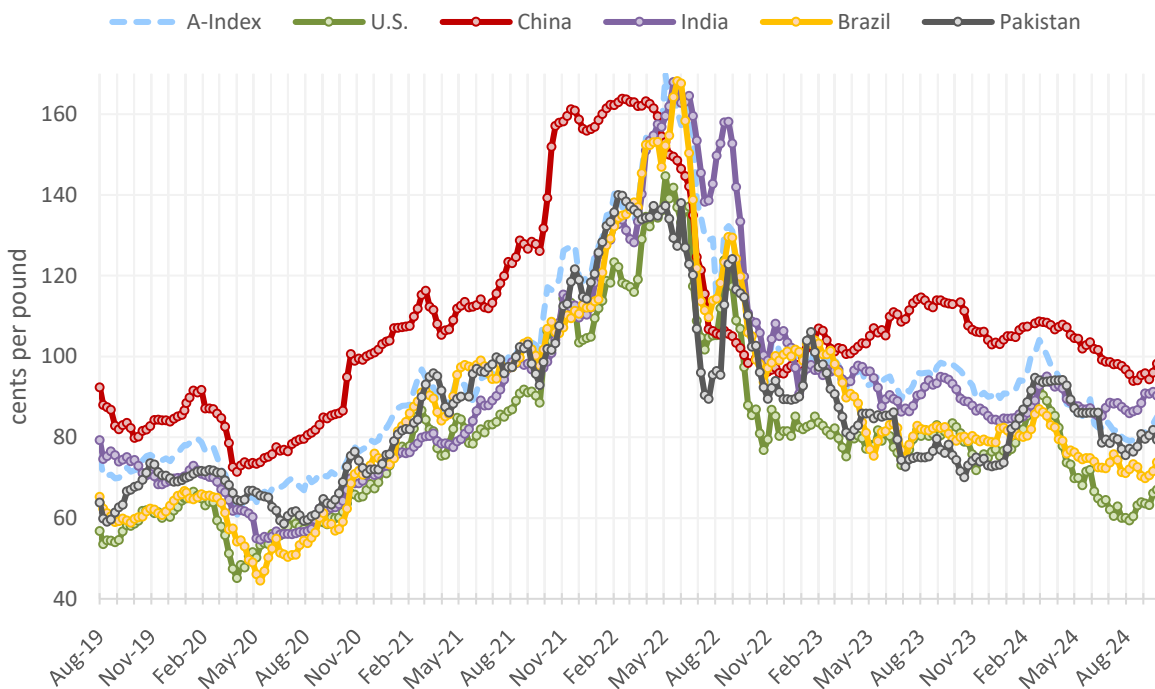
The observed **A-Index** this month includes the simple average of the following 5 quotes: Brazil, Greece, Memphis/Orleans/Texas, Ivory Coast, and Memphis/Eastern. Brazil is once again the lowest quoted origin at 80.75 cents per pound; Memphis/Eastern is the highest at 85.25 cents. The A-Index relative to ICE is roughly 12 cents higher and slightly above the previous year. Note the A-index includes the 5 *cheapest* origins of 'medium grade' cotton landed at a port in the Far East; quotations are compiled and published daily.

Spot Quotation Minus ICE Futures (2023 vs. 2024)



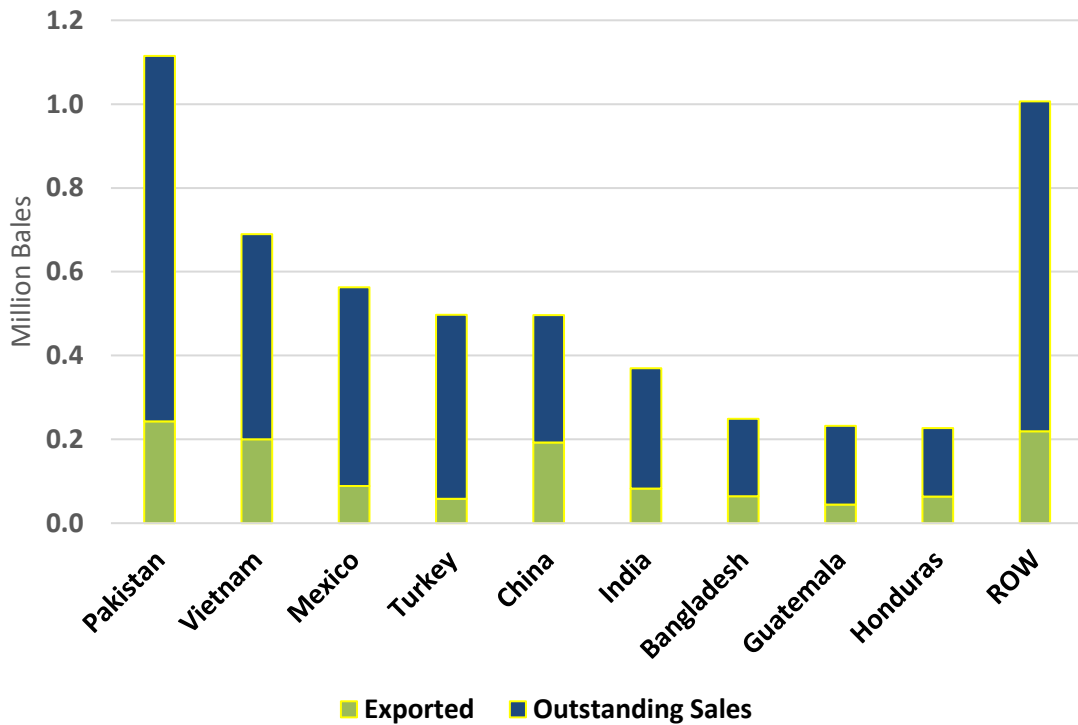
Notes: The chart visualizes a general value for basis (i.e., cash price minus futures). Quality and location (gin, port, textile mill, etc.) are significant in determining the quotation's relative value and basis, please see [Notes on Price Series](#) for more information.

Weekly Cotton Prices



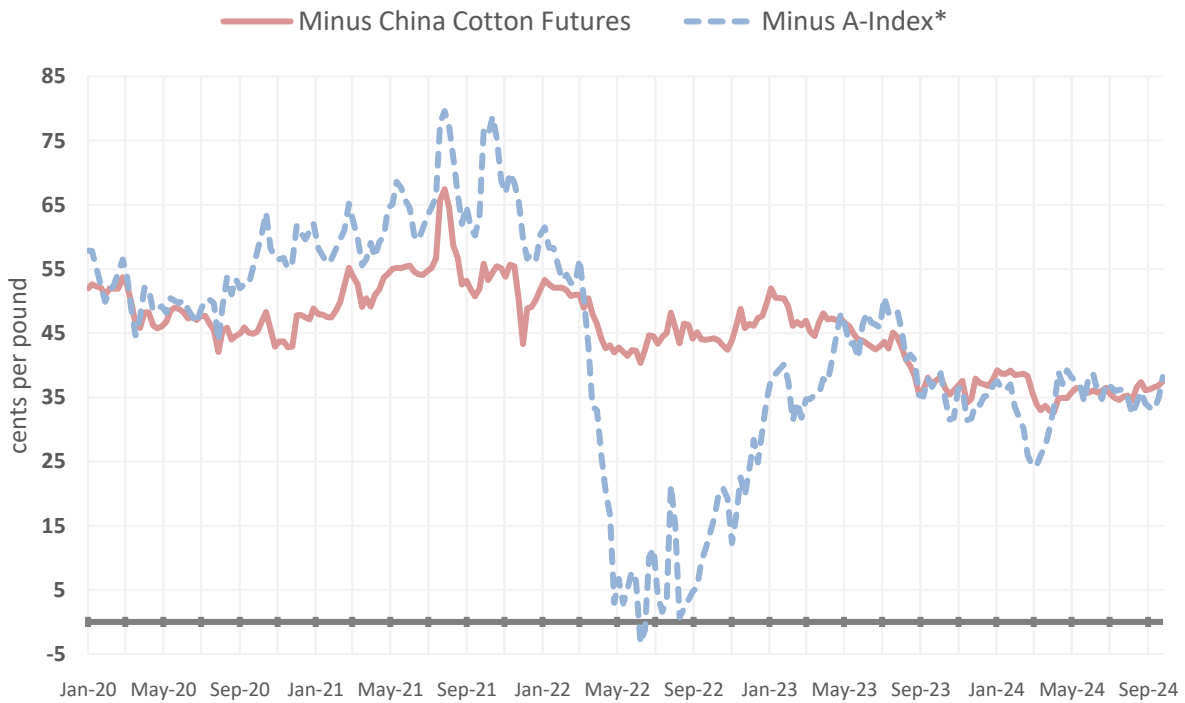
[Notes on Price Series](#)

U.S. 2024/25 Shipments & Outstanding Sales (Aug. 1, 2024 - October 3, 2024)



Source: USDA FAS Export Sales Reporting (ESR); Note: ROW (Rest of World)

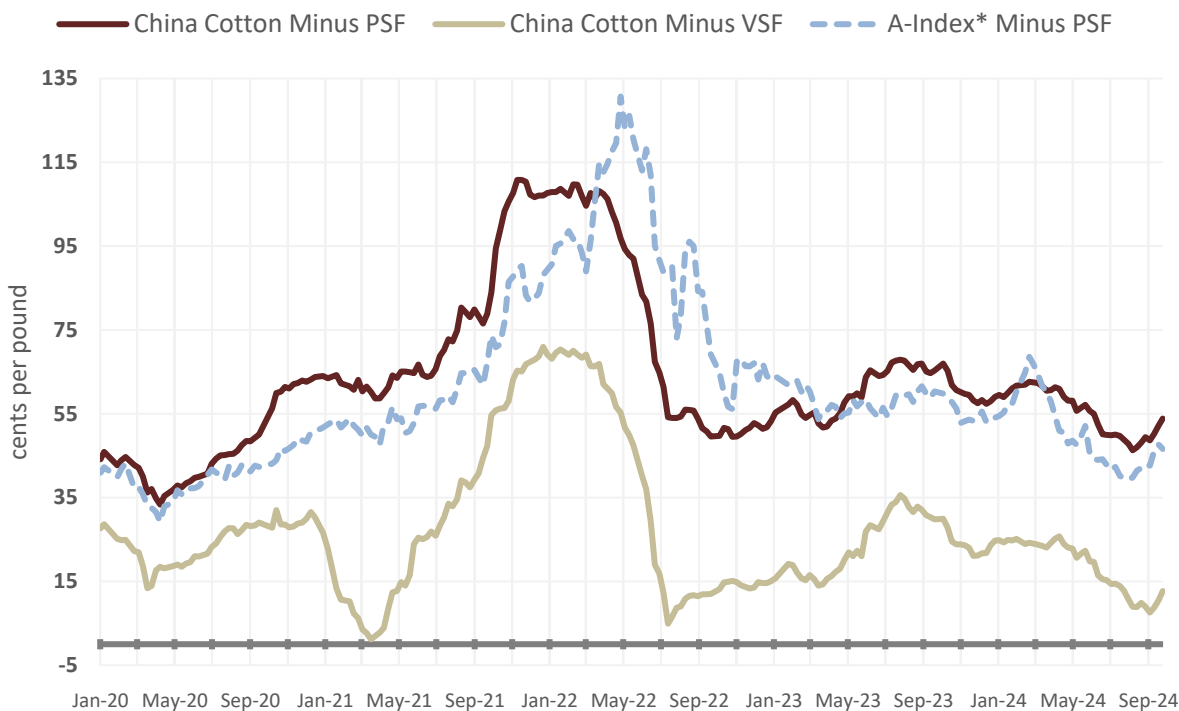
China Cotton Yarn Futures Relative to Cotton



Note: *A-Index is a customs-cleared estimate in China (including 1-percent tariff and 9-percent Value Added Tax). The cotton yarn and cotton futures prices used are the nearby contracts on the Zhengzhou Commodity Exchange.

A time series showing the difference in the futures price of cotton yarn and cotton lint is an indicator of potential changes in spinners' profitability and thus marginal changes in global cotton consumption. China yarn futures are included here because of the country's prowess as the largest cotton yarn manufacturer (i.e., cotton consumer) and importer of cotton fiber and yarn.

Cotton Fiber Relative to Competing Fibers



Note: *A-Index is a customs-cleared estimate in China (including 1-percent import tariff and 9-percent Value Added Tax); Polyester Staple Fiber (PSF) and Viscose Staple Fiber (VSF). China Cotton is the spot price noted in the Price Series below.

A time series showing the difference in the spot price of cotton fiber relative to Polyester Staple Fiber (PSF) and Viscose Staple Fiber (VSF) is an indicator of potential changes in spinners' incentive to increase their substitution of synthetic and artificial fibers for cotton. China is depicted here because the country is the largest consumer of all fibers. The A-Index is also included to derive the difference in price between imported cotton and competing fibers in China.

Questions may be directed to:

Graham Soley – Foreign Agricultural Service 202-772-4235 (graham.soley@usda.gov)

Stephanie Galbraith – Foreign Agricultural Service 771-221-5954 (stephanie.galbraith@usda.gov)

Notes on Price Series

A-Index is published by Cotton Outlook and reflects the average of the five cheapest quotations (quality being middling 1^{1/8} inch) of upland cottons traded internationally; the delivery price reflects Cost and Freight (CFR) to a Far Eastern Port.

U.S. is the simple average reported by the Agricultural Marketing Service, Free On Board (FOB) car/truck across seven U.S. spot markets of grade strict low middling.

China is the reported China Cotton Price Index (i.e., CCIIndex 3128B) and reflects the national weighted average of middling grade cotton; the delivery price is at the textile mill in China.

India is the Shankar-6 (middling grade 29-3.8-76) spot price and is reported ex-gin (at the gin yard) in Gujarat.

Brazil is strict low middling and reflects the delivered price to a mill in São Paulo.

Pakistan is the ex-gin (at the gin yard) price in Karachi reflecting a 1^{1/16} inch staple and grade 3.

Month-Year	Historical Cotton: World Markets and Trade Publications
Sep-24	Historical Revisions to U.S. Cotton Exports and Stocks
Aug-24	Historical China Cotton Stocks Revised Downward
Jul-24	Brazil Passes the United States as Top Cotton Exporter in 2023/24
Jun-24	2023/24 China Cotton Imports Surge to 11-Year High
May-24	2024/25 Global Use Forecast at 4-Year High
Apr-24	Iran Cotton Consumption Forecast at a Record High
Mar-24	Turkey Cotton Exports Rise as Domestic Use Falls
Feb-24	2023 U.S. Cotton Product Imports Slump
Jan-24	2023/24 Mexico Cotton Consumption Unravels
Dec-23	2023 China Reserve Sales Surpass 4.0 Million Bales
Nov-23	China's Synthetic Fabric Exports Expand Relative to Cotton Fiber
Oct-23	Historical Revisions to Brazil Production Significantly Lowers Stocks
Sep-23	USDA Methodology for Calculating U.S. Cotton Exports
Aug-23	Bangladesh: Growing Apparel Exports Set to Boost 2023/24 Consumption
Jul-23	2022/23 China Imports Fall to 5-Year Low
Jun-23	2022/23 Indonesia Consumption Collapses
May-23	2023/24 Global Use Forecast at 3-Year High
Apr-23	India Exports Fall Drastically as Imports Rise
Mar-23	2022 U.S. Cotton Product Imports Decline from Last Year's Surge
Feb-23	Pakistan 2022/23 Consumption Projected at Lowest Level in 21 Years
Jan-23	2022/23 U.S. Exports Fall on Lower Global Demand
Dec-22	2022/23 Global Consumption Projected Down Again
Nov-22	China's Sluggish Yarn Imports Signal Slowing Global Cotton Consumption
Oct-22	U.S. Exports Down to the Lowest Level in 7 Years

Production, Supply, and Distribution (PSD) Attributes for Cotton

(Note: Area Harvested is reported in thousand hectares and all other attributes in thousand 480-lb bale equivalents.)

Marketing Year: August – July, for example, the 2023/24 marketing year is August 1, 2023 – July 31, 2024.

Area Harvested: The area of land planted to cotton from which seed cotton is harvested.

Beginning Stocks: The quantity of cotton lint physically located within a country on August 1 (the first day of the marketing year, for example, August 1, 2023 of the 2023/24 marketing year) and includes cotton lint in transit. Beginning stocks equal the ending stocks of the previous year.

Production: The quantity of cotton lint ginned from harvested seed cotton during the marketing year and does not include cotton [linters](#) (short fibers attached to cottonseed).

Imports/Exports: The quantity of cotton lint physically imported into or exported from the country during the respective marketing year. This includes the Harmonized System (HS) code specific to the four-digit heading 5201 (Cotton, not carded or combed) and specific to unprocessed cotton lint. For some countries, imports include cotton bales in bonded warehouses that have *and* have not cleared customs.

Domestic Use: Also referred to as cotton consumption or mill use. All cotton lint that has been processed during the marketing year and excludes cotton linters. Domestic yarn production (100% cotton fiber or cotton blended with other fibers) usually accounts for more than 90 percent of domestic use. Yarn production occurs at a spinning mill and hence is also referred to as “spinning”. Use outside of yarn production typically includes nonwoven fabric production (see [nonwoven products](#)).

Ending Stocks: The quantity of cotton lint physically located within a country on July 31 (the last day of the marketing year, for example, July 31, 2024, of the 2023/24 marketing year) and includes cotton lint in transit. Ending Stocks will always equal the following year’s beginning stocks.

Loss: Cotton that has been destroyed or cannot be accounted for. Loss may also include “negative loss” when the estimates of Ending Stocks exceed the difference between **Total Supply** and total use (total use is equal to **Exports** plus **Domestic Use**).

Other Terminology

Cotton Textiles: Refers to both the yarn and fabric industries. This mostly pertains to spinning mills (yarn manufacturers), weavers (woven fabric manufacturers), and knitters (knit fabric manufacturers).³

Cotton Products: Refers to end-use products including apparel and home goods (e.g., towels and bed sheets) as well as [nonwoven products](#) (e.g., medical and hygiene products). When referencing “cotton product” trade data, certain imports are not included that contain cotton fiber. Circular analyses include

³ Dyeing operations can occur anywhere between the manufacture of yarn, fabric, and end-product but typically at the fabric mill.

HS (Harmonized System) codes that specify cotton as the primary fiber and typically state “of cotton” in the product code description.

Garment Manufacturers: Typically reflects cut-and-sew and finishing operations to assemble and produce the final end-products such as apparel (i.e., cotton products).

Example of Cotton Supply Chain

Cotton planted [**Farm**] → Cotton harvested [**Farm**] → Cotton ginned to separate lint from seed and compressed into bale (represented as Production in the PSD) [**Gin**] → Cotton bales spun into yarn or fibers processed into nonwoven products (represented as Domestic Use in the PSD) [**Spinning Mill**] → Yarn woven or knit into fabric [**Fabric Mill**] → Fabric is dyed and processed [**Fabric Mill**] → Finished fabric is cut-and-sewn into apparel or other finished product [**Garment Manufacturer**] → [**Retailer**]

The Foreign Agricultural Service (FAS) updates its production, supply, and distribution (PSD) database for cotton, oilseeds, and grains at 12:00 p.m. on the day the *World Agricultural Supply and Demand Estimates* (WASDE) report is released. This circular is released by 12:15 p.m.

FAS Reports and Databases:

Current *World Markets and Trade* and *World Agricultural Production* Reports:

<https://apps.fas.usda.gov/psdonline/app/index.html#/app/downloads>

Archives *World Markets and Trade* and *World Agricultural Production* Reports:

<http://usda.mannlib.cornell.edu/MannUsda/viewTaxonomy.do?taxonomyID=7>

Production, Supply and Distribution Database (PSD Online):

<https://apps.fas.usda.gov/psdonline/app/index.html#/app/home>

Global Agricultural Trade System (U.S. Exports and Imports):

<http://apps.fas.usda.gov/gats/default.aspx>

Export Sales Report:

<http://apps.fas.usda.gov/esquery/>

Global Agricultural Information Network (Agricultural Attaché Reports):

<http://gain.fas.usda.gov/Pages/Default.aspx>

Other USDA Reports:

World Agricultural Supply and Demand Estimates (WASDE):

<http://www.usda.gov/oce/commodity/wasde/>

Economic Research Service:

<http://www.ers.usda.gov/topics/crops>

National Agricultural Statistics Service:

<http://www.nass.usda.gov/Publications>

Summary of Changes in estimates and Forecasts from Last Month
(1,000 480 lb Bales and 1,000 Ha)

Country Mktg Year	Area Harvested	Beginning Stocks	Production	Imports	Exports	Domestic Use	Loss	Ending Stocks
Argentina								
2023/24	0	0	100	0	1	0	0	99
2024/25	25	99	75	0	0	0	0	174
Australia								
2023/24	0	0	0	0	-14	0	0	14
2024/25	0	14	0	0	0	0	0	14
Azerbaijan								
2023/24	0	0	0	0	20	0	0	-20
2024/25	0	-20	0	0	0	0	0	-20
Bangladesh								
2023/24	0	0	0	275	0	150	0	125
2024/25	0	125	0	0	0	100	0	25
Brazil								
2023/24	0	0	0	0	0	63	0	-63
2024/25	0	-63	100	0	-200	0	0	237
China								
2023/24	0	0	0	0	0	500	0	-500
2024/25	0	-500	400	-500	0	0	0	-600
Colombia								
2023/24	0	0	0	1	0	1	0	0
Costa Rica								
2023/24	0	0	0	1	1	2	0	-2
2024/25	0	-2	0	0	0	0	0	-2
Czech Republic								
2023/24	0	0	0	-1	0	-1	0	0
Ecuador								
2023/24	0	0	0	-4	0	-5	0	1
2024/25	0	1	0	0	0	0	0	1
Estonia								
2023/24	0	0	0	1	0	1	0	0
France								
2023/24	0	0	0	1	0	1	0	0
Germany								

Summary of Changes in estimates and Forecasts from Last Month (Continued)
(1,000 480 lb Bales and 1,000 Ha)

Country Mktg Year	Area Harvested	Beginning Stocks	Production	Imports	Exports	Domestic Use	Loss	Ending Stocks
2023/24	0	0	0	-3	0	-3	0	0
Greece								
2023/24	0	0	0	-3	42	0	0	-45
2024/25	0	-45	0	0	0	0	0	-45
Guatemala								
2023/24	0	0	0	3	0	0	0	3
2024/25	0	3	0	30	0	30	0	3
Hong Kong								
2023/24	0	0	0	-1	-1	0	0	0
Hungary								
2023/24	0	0	0	-1	-1	0	0	0
India								
2023/24	0	0	0	10	-15	0	0	25
2024/25	0	25	0	0	0	0	0	25
Italy								
2023/24	0	0	0	-7	0	-5	0	-2
2024/25	0	-2	0	0	0	0	0	-2
Kazakhstan								
2023/24	0	0	0	0	-3	0	0	3
2024/25	0	3	0	0	0	0	0	3
Kyrgyzstan								
2023/24	0	0	0	0	-6	0	0	6
2024/25	0	6	0	0	5	0	0	1
Malaysia								
2023/24	0	0	0	5	-24	25	0	4
2024/25	0	4	0	0	0	0	0	4
Mauritius								
2023/24	0	0	0	-2	0	-2	0	0
Morocco								
2023/24	0	0	0	-2	0	-1	0	-1
2024/25	0	-1	0	0	0	0	0	-1
Netherlands								
2023/24	0	0	0	-3	1	-4	0	0

Summary of Changes in estimates and Forecasts from Last Month (Continued)
(1,000 480 lb Bales and 1,000 Ha)

Country Mktg Year	Area Harvested	Beginning Stocks	Production	Imports	Exports	Domestic Use	Loss	Ending Stocks
Peru								
2023/24	0	0	0	-1	-1	0	0	0
Philippines								
2022/23	0	0	0	0	0	2	0	-2
2023/24	0	-2	0	-15	0	-13	0	-4
2024/25	0	-4	0	-18	0	-17	0	-5
Poland								
2023/24	0	0	0	-1	0	-1	0	0
Portugal								
2023/24	0	0	0	-1	0	0	0	-1
2024/25	0	-1	0	0	0	0	0	-1
Senegal								
2023/24	0	0	0	0	-3	0	0	3
2024/25	0	3	0	0	0	0	0	3
Slovenia								
2023/24	0	0	0	-2	0	-2	0	0
South Africa								
2023/24	1	0	10	0	0	5	0	5
2024/25	0	5	0	0	0	0	0	5
Spain								
2023/24	0	0	-15	0	-4	0	0	-11
2024/25	-5	-11	-45	0	-25	0	0	-31
Sri Lanka								
2023/24	0	0	0	-1	0	-1	0	0
Taiwan								
2023/24	0	0	0	-10	0	-10	0	0
2024/25	0	0	0	-25	0	-20	0	-5
Tajikistan								
2023/24	0	0	0	0	50	0	0	-50
2024/25	0	-50	0	0	0	0	0	-50
Ukraine								
2023/24	0	0	0	1	0	1	0	0
United States								

Summary of Changes in estimates and Forecasts from Last Month (Continued)
(1,000 480 lb Bales and 1,000 Ha)

Country Mktg Year	Area Harvested	Beginning Stocks	Production	Imports	Exports	Domestic Use	Loss	Ending Stocks
2024/25	0	0	-311	0	-300	-100	-11	100
World								
World								
2022/23	0	0	0	0	0	2	0	-2
2023/24	1	-2	95	239	43	700	0	-411
2024/25	20	-411	219	-513	-520	-7	-11	-167

Table 01 Cotton World Supply, Use, and Trade (Season Beginning August 1)
(1000 MT)

	2020/21	2021/22	2022/23	2023/24	Sep 2024/25	Oct 2024/25
Production						
China	6,379	5,813	6,695	5,955	6,053	6,140
India	5,987	5,291	5,726	5,617	5,225	5,225
Brazil	3,000	2,356	2,552	3,172	3,636	3,658
United States	3,181	3,815	3,150	2,627	3,160	3,092
Pakistan	980	1,306	849	1,524	1,241	1,241
Australia	610	1,274	1,263	1,089	1,089	1,089
Turkey	631	827	1,067	697	871	871
Other	3,995	4,214	4,055	4,066	4,073	4,080
Total	24,763	24,896	25,357	24,747	25,348	25,395
Domestic Use						
China	9,014	7,272	8,208	8,382	8,274	8,274
India	5,661	5,443	5,334	5,443	5,552	5,552
Pakistan	2,373	2,330	1,894	2,112	2,090	2,090
Bangladesh	1,894	1,916	1,676	1,687	1,676	1,698
Turkey	1,818	1,872	1,633	1,437	1,633	1,633
Vietnam	1,589	1,459	1,404	1,437	1,502	1,502
Brazil	708	694	678	689	718	718
Other	4,057	4,217	3,696	3,601	3,755	3,731
Total	27,114	25,203	24,525	24,788	25,201	25,199
Imports						
China	2,786	1,694	1,357	3,261	2,068	1,960
Bangladesh	1,829	1,840	1,524	1,649	1,676	1,676
Vietnam	1,587	1,444	1,409	1,434	1,502	1,502
Turkey	1,160	1,203	912	777	1,023	1,023
Pakistan	1,176	980	980	697	871	871
India	184	218	376	193	501	501
Indonesia	502	561	362	402	435	435
Other	1,353	1,405	1,277	1,160	1,282	1,279
Total	10,577	9,344	8,197	9,573	9,360	9,248
Exports						
Brazil	2,398	1,682	1,449	2,680	2,722	2,678
United States	3,495	3,059	2,711	2,558	2,569	2,504
Australia	344	778	1,347	1,250	1,176	1,176
India	1,348	815	239	503	283	283
Mali	152	283	163	256	250	250
Benin	342	388	239	229	239	239
Greece	355	311	290	212	218	218
Other	2,169	2,028	1,569	2,056	1,903	1,899
Total	10,602	9,344	8,007	9,743	9,360	9,247
Ending Stocks						
China	7,366	7,439	7,262	8,082	8,022	7,891
India	2,578	1,828	2,357	2,221	2,106	2,112
Brazil	461	446	873	677	889	941
United States	795	1,002	1,012	686	871	893
Australia	546	1,083	1,041	915	861	864
Argentina	324	339	400	475	480	518
Pakistan	474	419	332	403	414	414
Other	3,309	2,904	3,263	2,915	3,011	2,985
Total	15,852	15,460	16,540	16,373	16,654	16,618

Table 02 Cotton World Supply, Use, and Trade (Season Beginning August 1)
(1000 Bales)

	2020/21	2021/22	2022/23	2023/24	Sep 2024/25	Oct 2024/25
Production						
China	29,300	26,700	30,750	27,350	27,800	28,200
India	27,500	24,300	26,300	25,800	24,000	24,000
Brazil	13,780	10,820	11,720	14,570	16,700	16,800
United States	14,608	17,523	14,468	12,066	14,512	14,201
Pakistan	4,500	6,000	3,900	7,000	5,700	5,700
Australia	2,800	5,850	5,800	5,000	5,000	5,000
Turkey	2,900	3,800	4,900	3,200	4,000	4,000
Other	18,347	19,354	18,625	18,675	18,707	18,737
Total	113,735	114,347	116,463	113,661	116,419	116,638
Domestic Use						
China	41,400	33,400	37,700	38,500	38,000	38,000
India	26,000	25,000	24,500	25,000	25,500	25,500
Pakistan	10,900	10,700	8,700	9,700	9,600	9,600
Bangladesh	8,700	8,800	7,700	7,750	7,700	7,800
Turkey	8,350	8,600	7,500	6,600	7,500	7,500
Vietnam	7,300	6,700	6,450	6,600	6,900	6,900
Brazil	3,250	3,186	3,114	3,163	3,300	3,300
Uzbekistan	3,250	3,250	2,625	2,900	3,100	3,100
Indonesia	2,450	2,600	1,750	1,800	2,000	2,000
United States	2,400	2,550	2,050	1,850	1,900	1,800
Other	10,533	10,967	10,551	9,987	10,245	10,238
Total	124,533	115,753	112,640	113,850	115,745	115,738
Imports						
China	12,796	7,782	6,232	14,976	9,500	9,000
Bangladesh	8,400	8,450	7,000	7,575	7,700	7,700
Vietnam	7,288	6,631	6,471	6,585	6,900	6,900
Turkey	5,327	5,524	4,189	3,569	4,700	4,700
Pakistan	5,400	4,500	4,500	3,200	4,000	4,000
India	844	1,000	1,727	885	2,300	2,300
Indonesia	2,307	2,577	1,664	1,848	2,000	2,000
Mexico	928	959	689	695	925	925
Malaysia	629	444	687	730	725	725
Egypt	600	450	500	500	525	525
Other	4,059	4,600	3,988	3,405	3,714	3,701
Total	48,578	42,917	37,647	43,968	42,989	42,476
Exports						
Brazil	11,012	7,727	6,656	12,310	12,500	12,300
United States	16,050	14,050	12,450	11,750	11,800	11,500
Australia	1,581	3,571	6,186	5,741	5,400	5,400
India	6,189	3,743	1,099	2,310	1,300	1,300
Mali	700	1,300	750	1,175	1,150	1,150
Benin	1,570	1,780	1,100	1,050	1,100	1,100
Greece	1,630	1,428	1,331	972	1,000	1,000
Turkey	585	567	860	1,385	800	800
Argentina	563	658	186	581	700	700
Cote d'Ivoire	1,176	1,343	479	542	700	700
Other	7,640	6,748	5,680	6,934	6,541	6,521
Total	48,696	42,915	36,777	44,750	42,991	42,471
Ending Stocks						
China	33,830	34,167	33,355	37,119	36,844	36,244
India	11,839	8,396	10,824	10,199	9,674	9,699
Brazil	2,119	2,050	4,008	3,111	4,084	4,321
United States	3,650	4,600	4,650	3,150	4,000	4,100
Australia	2,507	4,976	4,780	4,204	3,955	3,969
Argentina	1,490	1,557	1,836	2,180	2,206	2,380
Pakistan	2,175	1,925	1,525	1,850	1,900	1,900
Other	15,199	13,336	14,987	13,388	13,829	13,712
Total	72,809	71,007	75,965	75,201	76,492	76,325

Table 04 Cotton Area, Yield, and Production

Country / Region	Area (Million hectares)				Yield (Kilograms per hectare)				Production (Million 480 lb. bales)				Change in Production			
	Prel.		2024/25 Proj.		Prel.		2024/25 Proj.		Prel.		2024/25 Proj.		From last month		From last year	
	2022/23	2023/24	Sep	Oct	2022/23	2023/24	Sep	Oct	2022/23	2023/24	Sep	Oct	MBales	Percent	MBales	Percent
World	31.71	31.35	31.14	31.16	800	789	814	815	116.46	113.66	116.42	116.64	0.22	0.19	2.98	2.62
United States	2.95	2.61	3.49	3.49	1,068	1,008	904	885	14.47	12.07	14.51	14.20	-0.31	-2.14	2.14	17.69
Total Foreign	28.76	28.74	27.65	27.67	772	770	803	806	102.00	101.60	101.91	102.44	0.53	0.52	0.84	0.83
Western Hemisphere																
Brazil	1.60	1.66	1.94	1.94	1,595	1,911	1,874	1,885	11.72	14.57	16.70	16.80	0.10	0.60	2.23	15.31
Mexico	0.20	0.13	0.12	0.12	1,720	1,435	1,497	1,497	1.58	0.87	0.83	0.83	0.00	0.00	-0.05	-5.17
Argentina	0.51	0.61	0.53	0.55	495	589	643	643	1.17	1.65	1.55	1.63	0.08	4.84	-0.03	-1.52
Paraguay	0.05	0.06	0.07	0.07	890	812	837	837	0.18	0.21	0.25	0.25	0.00	0.00	0.05	21.95
Peru	0.02	0.01	0.01	0.01	414	898	871	871	0.04	0.03	0.04	0.04	0.00	0.00	0.01	21.21
Colombia	0.01	0.01	0.01	0.01	1,026	904	1,005	1,005	0.07	0.05	0.06	0.06	0.00	0.00	0.01	11.11
Africa																
Burkina Faso	0.62	0.46	0.47	0.47	273	361	334	334	0.78	0.77	0.72	0.72	0.00	0.00	-0.05	-5.88
Mali	0.60	0.71	0.70	0.70	269	407	373	373	0.74	1.33	1.20	1.20	0.00	0.00	-0.13	-9.64
Cote d'Ivoire	0.41	0.40	0.37	0.37	236	358	430	430	0.45	0.65	0.73	0.73	0.00	0.00	0.08	12.31
Cameroon	0.23	0.24	0.24	0.24	563	671	602	602	0.60	0.74	0.65	0.65	0.00	0.00	-0.09	-12.16
Benin	0.57	0.51	0.55	0.55	418	482	459	459	1.10	1.13	1.15	1.15	0.00	0.00	0.02	1.77
Chad	0.22	0.20	0.17	0.17	196	234	211	211	0.20	0.21	0.17	0.17	0.00	0.00	-0.05	-21.43
Togo	0.07	0.08	0.09	0.09	297	354	333	333	0.09	0.13	0.13	0.13	0.00	0.00	0.00	0.00
Senegal	0.02	0.02	0.01	0.01	320	348	368	368	0.03	0.02	0.02	0.02	0.00	0.00	0.00	-8.33
Egypt	0.14	0.10	0.13	0.13	661	686	670	670	0.43	0.32	0.40	0.40	0.00	0.00	0.09	26.98
Zimbabwe	0.24	0.24	0.24	0.24	195	195	195	195	0.22	0.22	0.22	0.22	0.00	0.00	0.00	0.00
Nigeria	0.27	0.27	0.27	0.27	282	282	282	282	0.35	0.35	0.35	0.35	0.00	0.00	0.00	0.00
Asia Oceania																
China	3.10	2.85	2.85	2.85	2,160	2,089	2,124	2,154	30.75	27.35	27.80	28.20	0.40	1.44	0.85	3.11
India	12.93	12.70	11.80	11.80	443	442	443	443	26.30	25.80	24.00	24.00	0.00	0.00	-1.80	-6.98
Pakistan	1.80	2.40	2.00	2.00	472	635	621	621	3.90	7.00	5.70	5.70	0.00	0.00	-1.30	-18.57
Kazakhstan	0.13	0.12	0.12	0.12	584	558	544	544	0.34	0.30	0.30	0.30	0.00	0.00	0.00	0.00
Tajikistan	0.17	0.19	0.18	0.18	615	647	605	605	0.48	0.57	0.50	0.50	0.00	0.00	-0.07	-11.50
Turkmenistan	0.55	0.55	0.55	0.55	356	356	356	356	0.90	0.90	0.90	0.90	0.00	0.00	0.00	0.00
Uzbekistan	1.05	1.03	1.00	1.00	664	613	653	653	3.20	2.90	3.00	3.00	0.00	0.00	0.10	3.45
Turkey	0.56	0.44	0.49	0.49	1,922	1,583	1,796	1,796	4.90	3.20	4.00	4.00	0.00	0.00	0.80	25.00
Australia	0.65	0.51	0.55	0.55	1,943	2,156	1,979	1,979	5.80	5.00	5.00	5.00	0.00	0.00	0.00	0.00
Syria	0.03	0.03	0.03	0.03	1,161	1,161	1,161	1,161	0.16	0.16	0.16	0.16	0.00	0.00	0.00	0.00
Burma	0.19	0.18	0.19	0.19	664	654	654	654	0.56	0.55	0.57	0.57	0.00	0.00	0.02	4.39
Europe																
Greece	0.26	0.20	0.20	0.20	1,238	1,034	1,197	1,197	1.45	0.95	1.10	1.10	0.00	0.00	0.15	15.79
Others	1.59	1.86	1.79	1.79	485	432	452	448	3.54	3.68	3.72	3.67	-0.05	-1.21	-0.01	-0.27

Table 05 Cotton Supply and Distribution MY 2024/25
(1,000 HA and 1000 480-lb. Bales)

Country	Area Harvested	Production	Imports	Total Supply	Domestic Use	Loss	Exports	Ending Stocks
Afghanistan	200	400	0	477	15	0	400	62
Albania	1	1	0	2	1	0	0	1
Algeria	0	0	50	62	50	0	0	12
Angola	3	5	0	10	5	0	0	5
Argentina	550	1,625	0	3,805	725	0	700	2,380
Armenia	0	0	1	1	1	0	0	0
Australia	550	5,000	0	9,204	10	-175	5,400	3,969
Austria	0	0	1	2	1	0	0	1
Azerbaijan	100	475	0	612	60	0	425	127
Bahrain	0	0	30	35	30	0	0	5
Bangladesh	46	155	7,700	9,566	7,800	0	0	1,766
Belarus	0	0	15	18	15	0	0	3
Belgium-Luxembourg	0	0	20	24	17	0	3	4
Benin	545	1,150	0	1,273	15	0	1,100	158
Bolivia	4	10	1	17	12	0	0	5
Bosnia and Herzegovina	0	0	5	6	5	0	0	1
Brazil	1,940	16,800	10	19,921	3,300	0	12,300	4,321
Bulgaria	2	10	10	25	20	0	0	5
Burkina Faso	470	720	0	776	15	0	700	61
Burma	190	571	0	743	525	0	50	168
Cambodia	0	0	1	2	1	0	0	1
Cameroon	235	650	0	924	20	0	650	254
Canada	0	0	1	1	1	0	0	0
Central African Republic	34	36	0	53	0	0	36	17
Chad	170	165	0	275	10	0	150	115
Chile	0	0	1	2	1	0	0	1
China	2,850	28,200	9,000	74,319	38,000	0	75	36,244
Colombia	13	60	35	114	90	0	0	24
Congo (Kinshasa)	30	15	2	21	17	0	0	4
Costa Rica	0	0	70	84	70	0	0	14
Cote d'Ivoire	370	730	0	949	10	0	700	239
Croatia	0	0	1	1	1	0	0	0
Cuba	4	4	3	9	7	0	0	2
Cyprus	0	0	1	1	1	0	0	0
Czech Republic	0	0	5	6	5	0	0	1

Table 05 Cotton Supply and Distribution MY 2024/25 (Continued)
(1,000 HA and 1000 480-lb. Bales)

Country	Area Harvested	Production	Imports	Total Supply	Domestic Use	Loss	Exports	Ending Stocks
Denmark	0	0	0	0	0	0	0	0
Dominican Republic	0	0	1	2	1	0	0	1
Ecuador	1	1	35	43	35	0	0	8
Egypt	130	400	525	1,132	575	0	325	232
El Salvador	0	0	200	240	200	0	0	40
Estonia	0	0	15	19	15	0	0	4
Ethiopia	55	180	0	263	175	0	5	83
France	0	0	35	41	33	0	2	6
Germany	0	0	75	86	70	0	3	13
Ghana	15	28	0	34	15	0	15	4
Greece	200	1,100	30	1,284	70	0	1,000	214
Guatemala	0	0	230	275	230	0	0	45
Guinea	13	18	0	21	0	0	18	3
Haiti	7	5	0	6	5	0	0	1
Honduras	0	0	250	282	240	0	0	42
Hong Kong	0	0	1	7	0	0	1	6
Hungary	0	0	1	1	0	0	1	0
India	11,800	24,000	2,300	36,499	25,500	0	1,300	9,699
Indonesia	1	2	2,000	2,399	2,000	0	10	389
Iran	100	400	490	1,137	900	0	0	237
Iraq	10	15	20	45	35	0	0	10
Ireland	0	0	1	1	1	0	0	0
Israel	5	40	1	107	1	0	60	46
Italy	0	0	120	133	110	0	5	18
Japan	0	0	150	167	150	0	0	17
Kazakhstan	120	300	0	660	40	0	275	345
Kenya	10	5	30	45	35	0	0	10
Korea, North	19	55	15	90	75	0	0	15
Korea, South	0	0	250	331	270	0	3	58
Kyrgyzstan	19	95	0	127	5	0	95	27
Latvia	0	0	3	4	3	0	0	1
Lebanon	0	0	1	2	1	0	0	1
Lesotho	0	0	65	85	70	0	0	15
Lithuania	0	0	1	1	1	0	0	0
North Macedonia	0	0	2	3	2	0	0	1

Table 05 Cotton Supply and Distribution MY 2024/25 (Continued)
(1,000 HA and 1000 480-lb. Bales)

Country	Area Harvested	Production	Imports	Total Supply	Domestic Use	Loss	Exports	Ending Stocks
Madagascar	20	30	0	45	20	0	10	15
Malawi	80	90	0	184	20	0	70	94
Malaysia	0	0	725	1,323	600	0	100	623
Mali	700	1,200	0	1,589	25	0	1,150	414
Mauritius	0	0	75	89	75	0	0	14
Mexico	120	825	925	1,992	1,550	0	200	242
Moldova	0	0	35	45	35	0	0	10
Morocco	0	0	35	39	33	0	0	6
Mozambique	125	115	0	191	5	0	110	76
Netherlands	0	0	10	12	10	0	0	2
Nicaragua	0	0	75	87	75	0	0	12
Niger	5	9	0	14	0	0	9	5
Nigeria	270	350	0	459	250	0	100	109
Norway	0	0	0	0	0	0	0	0
Pakistan	2,000	5,700	4,000	11,550	9,600	0	50	1,900
Panama	0	0	1	1	1	0	0	0
Paraguay	65	250	0	414	30	0	225	159
Peru	10	40	180	255	210	0	5	40
Philippines	1	2	20	29	23	0	0	6
Poland	0	0	30	34	30	0	0	4
Portugal	0	0	160	191	150	0	10	31
Romania	0	0	1	2	1	0	0	1
Russia	0	0	90	106	85	0	5	16
Senegal	13	22	0	33	0	0	25	8
Serbia	0	0	5	6	5	0	0	1
Singapore	0	0	0	0	0	0	0	0
Slovakia	0	0	1	1	1	0	0	0
Slovenia	0	0	6	7	6	0	0	1
Somalia	12	7	3	11	10	0	0	1
South Africa	18	70	70	189	80	0	60	49
Spain	50	205	15	242	15	0	200	27
Sri Lanka	5	5	2	9	7	0	0	2
Sudan	200	600	0	839	50	0	525	264
Sweden	0	0	0	0	0	0	0	0
Switzerland	0	0	1	2	1	0	0	1

Table 05 Cotton Supply and Distribution MY 2024/25 (Continued)
(1,000 HA and 1000 480-lb. Bales)

Country	Area Harvested	Production	Imports	Total Supply	Domestic Use	Loss	Exports	Ending Stocks
Syria	30	160	0	289	75	0	150	64
Taiwan	0	0	150	190	155	0	0	35
Tajikistan	180	500	0	699	120	0	430	149
Tanzania	440	350	0	511	100	0	250	161
Thailand	1	2	400	493	415	0	0	78
Togo	85	130	0	217	0	0	125	92
Tunisia	0	0	10	11	9	0	0	2
Turkey	485	4,000	4,700	10,113	7,500	0	800	1,813
Turkmenistan	550	900	0	1,614	750	0	150	714
Uganda	100	170	0	297	15	0	150	132
Ukraine	0	0	1	1	1	0	0	0
United Kingdom	0	0	0	0	0	0	0	0
United States	3,494	14,201	5	17,356	1,800	-44	11,500	4,100
Uruguay	0	0	0	0	0	0	0	0
Uzbekistan	1,000	3,000	25	4,899	3,100	0	10	1,789
Venezuela	4	8	10	21	18	0	0	3
Vietnam	1	3	6,900	7,937	6,900	0	0	1,037
Yemen	5	8	0	10	8	0	0	2
Zambia	40	45	0	153	5	0	45	103
Zimbabwe	240	215	0	602	45	0	200	357
World								
World	31,161	116,638	42,476	234,315	115,738	-219	42,471	76,325

Table 05A Cotton Supply and Distribution MY 2024/25
(1000 MT and 1000 HA)

Country	Area Harvested	Production	Imports	Total Supply	Domestic Use	Loss	Exports	Ending Stocks
Afghanistan	200	87	0	104	3	0	87	13
Albania	1	0	0	0	0	0	0	0
Algeria	0	0	11	13	11	0	0	3
Angola	3	1	0	2	1	0	0	1
Argentina	550	354	0	828	158	0	152	518
Armenia	0	0	0	0	0	0	0	0
Australia	550	1,089	0	2,004	2	-38	1,176	864
Austria	0	0	0	0	0	0	0	0
Azerbaijan	100	103	0	133	13	0	93	28
Bahrain	0	0	7	8	7	0	0	1
Bangladesh	46	34	1,676	2,083	1,698	0	0	385
Belarus	0	0	3	4	3	0	0	1
Belgium-Luxembourg	0	0	4	5	4	0	1	1
Benin	545	250	0	277	3	0	239	34
Bolivia	4	2	0	4	3	0	0	1
Bosnia and Herzegovina	0	0	1	1	1	0	0	0
Brazil	1,940	3,658	2	4,337	718	0	2,678	941
Bulgaria	2	2	2	5	4	0	0	1
Burkina Faso	470	157	0	169	3	0	152	13
Burma	190	124	0	162	114	0	11	37
Cambodia	0	0	0	0	0	0	0	0
Cameroon	235	142	0	201	4	0	142	55
Canada	0	0	0	0	0	0	0	0
Central African Republic	34	8	0	12	0	0	8	4
Chad	170	36	0	60	2	0	33	25
Chile	0	0	0	0	0	0	0	0
China	2,850	6,140	1,960	16,181	8,274	0	16	7,891
Colombia	13	13	8	25	20	0	0	5
Congo (Kinshasa)	30	3	0	5	4	0	0	1
Costa Rica	0	0	15	18	15	0	0	3
Cote d'Ivoire	370	159	0	207	2	0	152	52
Croatia	0	0	0	0	0	0	0	0
Cuba	4	1	1	2	2	0	0	0
Cyprus	0	0	0	0	0	0	0	0
Czech Republic	0	0	1	1	1	0	0	0

Table 05A Cotton Supply and Distribution MY 2024/25 (Continued)
(1000 MT and 1000 HA)

Country	Area Harvested	Production	Imports	Total Supply	Domestic Use	Loss	Exports	Ending Stocks
Denmark	0	0	0	0	0	0	0	0
Dominican Republic	0	0	0	0	0	0	0	0
Ecuador	1	0	8	9	8	0	0	2
Egypt	130	87	114	246	125	0	71	51
El Salvador	0	0	44	52	44	0	0	9
Estonia	0	0	3	4	3	0	0	1
Ethiopia	55	39	0	57	38	0	1	18
France	0	0	8	9	7	0	0	1
Germany	0	0	16	19	15	0	1	3
Ghana	15	6	0	7	3	0	3	1
Greece	200	239	7	280	15	0	218	47
Guatemala	0	0	50	60	50	0	0	10
Guinea	13	4	0	5	0	0	4	1
Haiti	7	1	0	1	1	0	0	0
Honduras	0	0	54	61	52	0	0	9
Hong Kong	0	0	0	2	0	0	0	1
Hungary	0	0	0	0	0	0	0	0
India	11,800	5,225	501	7,947	5,552	0	283	2,112
Indonesia	1	0	435	522	435	0	2	85
Iran	100	87	107	248	196	0	0	52
Iraq	10	3	4	10	8	0	0	2
Ireland	0	0	0	0	0	0	0	0
Israel	5	9	0	23	0	0	13	10
Italy	0	0	26	29	24	0	1	4
Japan	0	0	33	36	33	0	0	4
Kazakhstan	120	65	0	144	9	0	60	75
Kenya	10	1	7	10	8	0	0	2
Korea, North	19	12	3	20	16	0	0	3
Korea, South	0	0	54	72	59	0	1	13
Kyrgyzstan	19	21	0	28	1	0	21	6
Latvia	0	0	1	1	1	0	0	0
Lebanon	0	0	0	0	0	0	0	0
Lesotho	0	0	14	19	15	0	0	3
Lithuania	0	0	0	0	0	0	0	0
North Macedonia	0	0	0	1	0	0	0	0

Table 05A Cotton Supply and Distribution MY 2024/25 (Continued)
(1000 MT and 1000 HA)

Country	Area Harvested	Production	Imports	Total Supply	Domestic Use	Loss	Exports	Ending Stocks
Madagascar	20	7	0	10	4	0	2	3
Malawi	80	20	0	40	4	0	15	20
Malaysia	0	0	158	288	131	0	22	136
Mali	700	261	0	346	5	0	250	90
Mauritius	0	0	16	19	16	0	0	3
Mexico	120	180	201	434	337	0	44	53
Moldova	0	0	8	10	8	0	0	2
Morocco	0	0	8	8	7	0	0	1
Mozambique	125	25	0	42	1	0	24	17
Netherlands	0	0	2	3	2	0	0	0
Nicaragua	0	0	16	19	16	0	0	3
Niger	5	2	0	3	0	0	2	1
Nigeria	270	76	0	100	54	0	22	24
Norway	0	0	0	0	0	0	0	0
Pakistan	2,000	1,241	871	2,515	2,090	0	11	414
Panama	0	0	0	0	0	0	0	0
Paraguay	65	54	0	90	7	0	49	35
Peru	10	9	39	56	46	0	1	9
Philippines	1	0	4	6	5	0	0	1
Poland	0	0	7	7	7	0	0	1
Portugal	0	0	35	42	33	0	2	7
Romania	0	0	0	0	0	0	0	0
Russia	0	0	20	23	19	0	1	3
Senegal	13	5	0	7	0	0	5	2
Serbia	0	0	1	1	1	0	0	0
Singapore	0	0	0	0	0	0	0	0
Slovakia	0	0	0	0	0	0	0	0
Slovenia	0	0	1	2	1	0	0	0
Somalia	12	2	1	2	2	0	0	0
South Africa	18	15	15	41	17	0	13	11
Spain	50	45	3	53	3	0	44	6
Sri Lanka	5	1	0	2	2	0	0	0
Sudan	200	131	0	183	11	0	114	57
Sweden	0	0	0	0	0	0	0	0
Switzerland	0	0	0	0	0	0	0	0

Table 05A Cotton Supply and Distribution MY 2024/25 (Continued)
(1000 MT and 1000 HA)

Country	Area Harvested	Production	Imports	Total Supply	Domestic Use	Loss	Exports	Ending Stocks
Syria	30	35	0	63	16	0	33	14
Taiwan	0	0	33	41	34	0	0	8
Tajikistan	180	109	0	152	26	0	94	32
Tanzania	440	76	0	111	22	0	54	35
Thailand	1	0	87	107	90	0	0	17
Togo	85	28	0	47	0	0	27	20
Tunisia	0	0	2	2	2	0	0	0
Turkey	485	871	1,023	2,202	1,633	0	174	395
Turkmenistan	550	196	0	351	163	0	33	155
Uganda	100	37	0	65	3	0	33	29
Ukraine	0	0	0	0	0	0	0	0
United Kingdom	0	0	0	0	0	0	0	0
United States	3,494	3,092	1	3,779	392	-10	2,504	893
Uruguay	0	0	0	0	0	0	0	0
Uzbekistan	1,000	653	5	1,067	675	0	2	390
Venezuela	4	2	2	5	4	0	0	1
Vietnam	1	1	1,502	1,728	1,502	0	0	226
Yemen	5	2	0	2	2	0	0	0
Zambia	40	10	0	33	1	0	10	22
Zimbabwe	240	47	0	131	10	0	44	78
World								
World	31,161	25,395	9,248	51,017	25,199	-48	9,247	16,618

Table 06: Cotton Supply and Distribution by Country 2023/24
(1,000 HA and 1000 480-lb. Bales)

Country	Area Harvested	Production	Imports	Total Supply	Domestic Use	Loss	Exports	Ending Stocks
Afghanistan	250	500	0	517	15	0	425	77
Albania	1	1	0	2	1	0	0	1
Algeria	0	0	50	62	50	0	0	12
Angola	3	5	0	10	5	0	0	5
Argentina	610	1,650	0	3,486	725	0	581	2,180
Armenia	0	0	1	1	1	0	0	0
Australia	505	5,000	0	9,780	10	-175	5,741	4,204
Austria	0	0	1	2	1	0	0	1
Azerbaijan	94	450	0	682	50	0	495	137
Bahrain	0	0	33	37	32	0	0	5
Bangladesh	46	155	7,575	9,461	7,750	0	0	1,711
Belarus	0	0	15	18	15	0	0	3
Belgium-Luxembourg	0	0	18	23	16	0	3	4
Benin	510	1,130	0	1,188	15	0	1,050	123
Bolivia	4	10	1	18	12	0	0	6
Bosnia and Herzegovina	0	0	5	6	5	0	0	1
Brazil	1,660	14,570	6	18,584	3,163	0	12,310	3,111
Bulgaria	2	10	10	25	20	0	0	5
Burkina Faso	462	765	0	821	15	0	750	56
Burma	182	547	0	722	500	0	50	172
Cambodia	0	0	1	2	1	0	0	1
Cameroon	240	740	0	969	20	0	675	274
Canada	0	0	2	2	2	0	0	0
Central African Republic	34	36	0	54	0	0	37	17
Chad	195	210	0	335	10	0	215	110
Chile	0	0	1	2	1	0	0	1
China	2,850	27,350	14,976	75,681	38,500	0	62	37,119
Colombia	13	54	20	105	86	0	0	19
Congo (Kinshasa)	30	15	2	21	17	0	0	4
Costa Rica	0	0	61	72	57	0	1	14
Cote d'Ivoire	395	650	0	771	10	0	542	219
Croatia	0	0	1	1	1	0	0	0
Cuba	4	4	3	9	7	0	0	2
Cyprus	0	0	1	1	1	0	0	0
Czech Republic	0	0	4	5	4	0	0	1

Table 06: Cotton Supply and Distribution by Country 2023/24 (Continued)
(1,000 HA and 1000 480-lb. Bales)

Country	Area Harvested	Production	Imports	Total Supply	Domestic Use	Loss	Exports	Ending Stocks
Denmark	0	0	0	0	0	0	0	0
Dominican Republic	0	0	1	2	1	0	0	1
Ecuador	1	1	21	32	25	0	0	7
Egypt	100	315	500	1,048	575	0	266	207
El Salvador	0	0	180	220	180	0	0	40
Estonia	0	0	15	19	15	0	0	4
Ethiopia	55	180	0	263	175	0	5	83
France	0	0	33	40	31	0	3	6
Germany	0	0	67	81	65	0	5	11
Ghana	15	28	0	36	15	0	15	6
Greece	200	950	17	1,196	70	0	972	154
Guatemala	0	0	208	250	205	0	0	45
Guinea	13	18	0	21	0	0	18	3
Haiti	7	5	0	6	5	0	0	1
Honduras	0	0	235	252	220	0	0	32
Hong Kong	0	0	0	6	0	0	0	6
Hungary	0	0	1	1	0	0	1	0
India	12,700	25,800	885	37,509	25,000	0	2,310	10,199
Indonesia	1	2	1,848	2,211	1,800	0	14	397
Iran	100	350	477	1,098	850	0	1	247
Iraq	10	15	15	45	35	0	0	10
Ireland	0	0	1	1	1	0	0	0
Israel	5	40	1	102	1	0	35	66
Italy	0	0	98	116	95	0	8	13
Japan	0	0	130	152	135	0	0	17
Kazakhstan	117	300	0	822	40	0	422	360
Kenya	10	5	30	45	35	0	0	10
Korea, North	19	55	20	100	80	0	0	20
Korea, South	0	0	281	394	310	0	3	81
Kyrgyzstan	18	85	0	131	5	0	94	32
Latvia	0	0	2	4	3	0	0	1
Lebanon	0	0	1	2	1	0	0	1
Lesotho	0	0	70	90	70	0	0	20
Lithuania	0	0	1	1	1	0	0	0
North Macedonia	0	0	2	3	2	0	0	1

Table 06: Cotton Supply and Distribution by Country 2023/24 (Continued)
(1,000 HA and 1000 480-lb. Bales)

Country	Area Harvested	Production	Imports	Total Supply	Domestic Use	Loss	Exports	Ending Stocks
Madagascar	20	30	0	47	20	0	12	15
Malawi	80	90	0	184	20	0	70	94
Malaysia	0	0	730	1,249	600	0	51	598
Mali	710	1,328	0	1,589	25	0	1,175	389
Mauritius	0	0	73	92	78	0	0	14
Mexico	132	870	695	1,942	1,500	0	200	242
Moldova	0	0	30	42	32	0	0	10
Morocco	0	0	20	26	22	0	0	4
Mozambique	125	115	0	191	5	0	110	76
Netherlands	0	0	4	6	3	0	1	2
Nicaragua	0	0	35	52	40	0	0	12
Niger	5	9	0	14	0	0	9	5
Nigeria	270	350	0	459	250	0	100	109
Norway	0	0	0	0	0	0	0	0
Pakistan	2,400	7,000	3,200	11,725	9,700	0	175	1,850
Panama	0	0	1	1	1	0	0	0
Paraguay	55	205	0	349	30	0	155	164
Peru	8	33	139	224	180	0	9	35
Philippines	1	2	20	32	25	0	0	7
Poland	0	0	29	33	28	0	1	4
Portugal	0	0	154	186	135	0	20	31
Romania	0	0	1	2	1	0	0	1
Russia	0	0	85	101	80	0	5	16
Senegal	15	24	0	34	0	0	23	11
Serbia	0	0	4	5	4	0	0	1
Singapore	0	0	0	0	0	0	0	0
Slovakia	0	0	1	1	1	0	0	0
Slovenia	0	0	4	5	4	0	0	1
Somalia	12	7	3	11	10	0	0	1
South Africa	17	75	70	194	80	0	65	49
Spain	52	75	15	158	15	0	121	22
Sri Lanka	5	5	1	8	6	0	0	2
Sudan	200	600	0	834	70	0	525	239
Sweden	0	0	0	0	0	0	0	0
Switzerland	0	0	1	2	1	0	0	1

Table 06: Cotton Supply and Distribution by Country 2023/24 (Continued)
(1,000 HA and 1000 480-lb. Bales)

Country	Area Harvested	Production	Imports	Total Supply	Domestic Use	Loss	Exports	Ending Stocks
Syria	30	160	0	404	75	0	200	129
Taiwan	0	0	140	205	160	0	5	40
Tajikistan	190	565	0	804	115	0	490	199
Tanzania	465	470	0	636	125	0	350	161
Thailand	1	2	403	543	450	0	2	91
Togo	80	130	0	202	0	0	115	87
Tunisia	0	0	5	8	7	0	0	1
Turkey	440	3,200	3,569	9,398	6,600	0	1,385	1,413
Turkmenistan	550	900	0	1,614	750	0	150	714
Uganda	100	170	0	292	15	0	150	127
Ukraine	0	0	2	2	2	0	0	0
United Kingdom	0	0	0	1	1	0	0	0
United States	2,606	12,066	2	16,718	1,850	-32	11,750	3,150
Uruguay	0	0	0	0	0	0	0	0
Uzbekistan	1,030	2,900	10	4,789	2,900	0	15	1,874
Venezuela	4	8	10	20	17	0	0	3
Vietnam	1	3	6,585	7,634	6,600	0	0	1,034
Yemen	5	8	0	10	8	0	0	2
Zambia	40	45	0	188	5	0	75	108
Zimbabwe	240	215	0	554	40	0	127	387
World								
World	31,350	113,661	43,968	233,594	113,850	-207	44,750	75,201

Table 06A: Cotton Supply and Distribution by Country 2023/24
(1,000 Metric Tons)

Country	Area Harvested	Production	Imports	Domestic Use	Loss	Exports	Ending Stocks
Afghanistan	250	109	0	3	0	93	17
Albania	1	0	0	0	0	0	0
Algeria	0	0	11	11	0	0	3
Angola	3	1	0	1	0	0	1
Argentina	610	359	0	158	0	126	475
Armenia	0	0	0	0	0	0	0
Australia	505	1,089	0	2	-38	1,250	915
Austria	0	0	0	0	0	0	0
Azerbaijan	94	98	0	11	0	108	30
Bahrain	0	0	7	7	0	0	1
Bangladesh	46	34	1,649	1,687	0	0	373
Belarus	0	0	3	3	0	0	1
Belgium-Luxembourg	0	0	4	3	0	1	1
Benin	510	246	0	3	0	229	27
Bolivia	4	2	0	3	0	0	1
Bosnia and Herzegovina	0	0	1	1	0	0	0
Brazil	1,660	3,172	1	689	0	2,680	677
Bulgaria	2	2	2	4	0	0	1
Burkina Faso	462	167	0	3	0	163	12
Burma	182	119	0	109	0	11	37
Cambodia	0	0	0	0	0	0	0
Cameroon	240	161	0	4	0	147	60
Canada	0	0	0	0	0	0	0
Central African Republic	34	8	0	0	0	8	4
Chad	195	46	0	2	0	47	24
Chile	0	0	0	0	0	0	0
China	2,850	5,955	3,261	8,382	0	13	8,082
Colombia	13	12	4	19	0	0	4
Congo (Kinshasa)	30	3	0	4	0	0	1
Costa Rica	0	0	13	12	0	0	3
Cote d'Ivoire	395	142	0	2	0	118	48
Croatia	0	0	0	0	0	0	0
Cuba	4	1	1	2	0	0	0
Cyprus	0	0	0	0	0	0	0
Czech Republic	0	0	1	1	0	0	0

Table 06A: Cotton Supply and Distribution by Country 2023/24 (Continued)
(1,000 Metric Tons)

Country	Area Harvested	Production	Imports	Domestic Use	Loss	Exports	Ending Stocks
Denmark	0	0	0	0	0	0	0
Dominican Republic	0	0	0	0	0	0	0
Ecuador	1	0	5	5	0	0	2
Egypt	100	69	109	125	0	58	45
El Salvador	0	0	39	39	0	0	9
Estonia	0	0	3	3	0	0	1
Ethiopia	55	39	0	38	0	1	18
France	0	0	7	7	0	1	1
Germany	0	0	15	14	0	1	2
Ghana	15	6	0	3	0	3	1
Greece	200	207	4	15	0	212	34
Guatemala	0	0	45	45	0	0	10
Guinea	13	4	0	0	0	4	1
Haiti	7	1	0	1	0	0	0
Honduras	0	0	51	48	0	0	7
Hong Kong	0	0	0	0	0	0	1
Hungary	0	0	0	0	0	0	0
India	12,700	5,617	193	5,443	0	503	2,221
Indonesia	1	0	402	392	0	3	86
Iran	100	76	104	185	0	0	54
Iraq	10	3	3	8	0	0	2
Ireland	0	0	0	0	0	0	0
Israel	5	9	0	0	0	8	14
Italy	0	0	21	21	0	2	3
Japan	0	0	28	29	0	0	4
Kazakhstan	117	65	0	9	0	92	78
Kenya	10	1	7	8	0	0	2
Korea, North	19	12	4	17	0	0	4
Korea, South	0	0	61	67	0	1	18
Kyrgyzstan	18	19	0	1	0	20	7
Latvia	0	0	0	1	0	0	0
Lebanon	0	0	0	0	0	0	0
Lesotho	0	0	15	15	0	0	4
Lithuania	0	0	0	0	0	0	0
North Macedonia	0	0	0	0	0	0	0

Table 06A: Cotton Supply and Distribution by Country 2023/24 (Continued)
(1,000 Metric Tons)

Country	Area Harvested	Production	Imports	Domestic Use	Loss	Exports	Ending Stocks
Madagascar	20	7	0	4	0	3	3
Malawi	80	20	0	4	0	15	20
Malaysia	0	0	159	131	0	11	130
Mali	710	289	0	5	0	256	85
Mauritius	0	0	16	17	0	0	3
Mexico	132	189	151	327	0	44	53
Moldova	0	0	7	7	0	0	2
Morocco	0	0	4	5	0	0	1
Mozambique	125	25	0	1	0	24	17
Netherlands	0	0	1	1	0	0	0
Nicaragua	0	0	8	9	0	0	3
Niger	5	2	0	0	0	2	1
Nigeria	270	76	0	54	0	22	24
Norway	0	0	0	0	0	0	0
Pakistan	2,400	1,524	697	2,112	0	38	403
Panama	0	0	0	0	0	0	0
Paraguay	55	45	0	7	0	34	36
Peru	8	7	30	39	0	2	8
Philippines	1	0	4	5	0	0	2
Poland	0	0	6	6	0	0	1
Portugal	0	0	34	29	0	4	7
Romania	0	0	0	0	0	0	0
Russia	0	0	19	17	0	1	3
Senegal	15	5	0	0	0	5	2
Serbia	0	0	1	1	0	0	0
Singapore	0	0	0	0	0	0	0
Slovakia	0	0	0	0	0	0	0
Slovenia	0	0	1	1	0	0	0
Somalia	12	2	1	2	0	0	0
South Africa	17	16	15	17	0	14	11
Spain	52	16	3	3	0	26	5
Sri Lanka	5	1	0	1	0	0	0
Sudan	200	131	0	15	0	114	52
Sweden	0	0	0	0	0	0	0
Switzerland	0	0	0	0	0	0	0

Table 06A: Cotton Supply and Distribution by Country 2023/24 (Continued)
(1,000 Metric Tons)

Country	Area Harvested	Production	Imports	Domestic Use	Loss	Exports	Ending Stocks
Syria	30	35	0	16	0	44	28
Taiwan	0	0	30	35	0	1	9
Tajikistan	190	123	0	25	0	107	43
Tanzania	465	102	0	27	0	76	35
Thailand	1	0	88	98	0	0	20
Togo	80	28	0	0	0	25	19
Tunisia	0	0	1	2	0	0	0
Turkey	440	697	777	1,437	0	302	308
Turkmenistan	550	196	0	163	0	33	155
Uganda	100	37	0	3	0	33	28
Ukraine	0	0	0	0	0	0	0
United Kingdom	0	0	0	0	0	0	0
United States	2,606	2,627	0	403	-7	2,558	686
Uruguay	0	0	0	0	0	0	0
Uzbekistan	1,030	631	2	631	0	3	408
Venezuela	4	2	2	4	0	0	1
Vietnam	1	1	1,434	1,437	0	0	225
Yemen	5	2	0	2	0	0	0
Zambia	40	10	0	1	0	16	24
Zimbabwe	240	47	0	9	0	28	84
World							
World	31,350	24,747	9,573	24,788	-45	9,743	16,373

Table 09: World Cotton Supply and Distribution
(1,000 HA and 1000 480-lb. Bales)

Country Mktg Year	Beginning Stocks	Area Harvested	Production	Imports	Total Supply	Exports	Domestic Use	Loss	Ending Stocks	Stock to Use %
World										
1993/94	34,603	30,718	77,550	27,917	140,070	26,620	85,435	143	27,872	33
1994/95	27,872	32,180	85,934	30,340	144,146	28,018	84,462	-330	31,996	38
1995/96	31,996	35,913	93,656	26,994	152,646	27,296	85,853	-544	40,041	47
1996/97	40,041	33,763	89,814	28,564	158,419	26,602	87,851	-535	44,501	51
1997/98	44,501	33,772	92,074	25,909	162,484	26,777	87,070	-506	49,143	56
1998/99	49,143	32,871	85,820	24,460	159,423	23,507	84,358	-1,014	52,572	62
1999/00	52,572	32,341	87,743	27,968	168,283	27,126	90,534	-477	51,100	56
2000/01	51,100	31,945	88,449	26,182	165,731	26,156	91,713	-1,249	49,111	54
2001/02	49,111	33,783	99,275	29,266	177,652	29,081	94,269	-631	54,933	58
2002/03	54,933	30,727	90,630	30,151	175,714	30,400	98,293	-654	47,675	49
2003/04	47,675	31,895	94,388	34,119	176,182	33,072	98,034	-759	45,835	47
2004/05	45,835	35,581	121,521	33,939	201,295	34,949	109,007	-1,095	58,434	54
2005/06	58,434	35,026	117,388	44,649	220,471	44,922	116,448	-1,666	60,767	52
2006/07	60,767	34,324	120,400	38,285	219,452	37,416	123,925	-1,588	59,699	48
2007/08	59,699	32,883	119,665	39,451	218,815	38,868	123,890	-1,992	58,049	47
2008/09	58,049	30,834	109,865	30,534	198,448	30,207	110,628	-1,389	59,002	53
2009/10	59,002	30,188	103,171	36,931	199,104	35,805	119,584	20	43,695	37
2010/11	43,695	33,252	113,632	36,449	193,776	34,902	115,552	82	43,240	37
2011/12	43,240	36,000	127,634	45,432	216,306	45,978	103,914	-327	66,741	64
2012/13	66,741	34,757	126,301	47,479	240,521	46,298	107,745	-477	86,955	81
2013/14	86,955	32,562	118,614	41,436	247,005	41,228	109,240	-38	96,575	88
2014/15	96,575	33,939	119,998	36,528	253,101	36,226	112,825	208	103,842	92
2015/16	103,842	30,777	96,996	35,626	236,464	34,885	113,527	89	87,963	77
2016/17	87,963	29,777	105,079	37,760	230,802	38,114	116,592	-64	76,160	65
2017/18	76,160	33,200	121,645	41,336	239,141	41,608	123,012	-195	74,716	61
2018/19	74,716	32,479	113,763	42,374	230,853	41,509	118,990	-130	70,484	59
2019/20	70,484	34,239	118,525	40,725	229,734	40,985	105,218	-54	83,585	79
2020/21	83,585	31,506	113,735	48,578	245,898	48,696	124,533	-140	72,809	58
2021/22	72,809	32,107	114,347	42,917	230,073	42,915	115,753	398	71,007	61
2022/23	71,007	31,713	116,463	37,647	225,117	36,777	112,640	-265	75,965	67
2023/24	75,965	31,350	113,661	43,968	233,594	44,750	113,850	-207	75,201	66
2024/25	75,201	31,161	116,638	42,476	234,315	42,471	115,738	-219	76,325	66

Table 10: United States Cotton Supply and Distribution
(1,000 HA and 1000 480-lb. Bales)

Country Mktg Year	Area Harvested	Yield	Beginning Stocks	Production	Imports	Total Supply	Exports	Domestic Use	Loss	Ending Stocks	Stock to Use %
United States											
1993/94	5,173	679	4,662	16,134	6	20,802	6,862	10,418	-8	3,530	20
1994/95	5,391	794	3,530	19,662	20	23,212	9,402	11,198	-38	2,650	13
1995/96	6,478	602	2,650	17,900	408	20,958	7,675	10,647	27	2,609	14
1996/97	5,216	791	2,609	18,942	403	21,954	6,865	11,126	-8	3,971	22
1997/98	5,425	754	3,971	18,793	13	22,777	7,500	11,349	41	3,887	21
1998/99	4,324	701	3,887	13,918	439	18,244	4,298	10,401	-394	3,939	27
1999/00	5,433	680	3,939	16,968	97	21,004	6,750	10,194	145	3,915	23
2000/01	5,282	708	3,915	17,188	16	21,119	6,740	8,862	-483	6,000	38
2001/02	5,596	790	6,000	20,303	21	26,324	11,000	7,696	180	7,448	40
2002/03	5,025	746	7,448	17,209	67	24,724	11,900	7,273	166	5,385	28
2003/04	4,858	818	5,385	18,255	45	23,685	13,758	6,266	211	3,450	17
2004/05	5,284	958	3,450	23,251	29	26,730	14,436	6,691	108	5,495	26
2005/06	5,586	931	5,495	23,890	28	29,413	17,673	5,871	-200	6,069	26
2006/07	5,152	912	6,069	21,588	19	27,676	12,959	4,935	303	9,479	53
2007/08	4,245	985	9,479	19,207	12	28,698	13,634	4,584	429	10,051	55
2008/09	3,063	912	10,051	12,825	0	22,876	13,261	3,541	-263	6,337	38
2009/10	3,049	870	6,337	12,183	0	18,520	12,037	3,550	-14	2,947	19
2010/11	4,330	910	2,947	18,102	9	21,058	14,376	3,900	182	2,600	14
2011/12	3,829	886	2,600	15,573	19	18,192	11,714	3,300	-172	3,350	22
2012/13	3,772	999	3,350	17,314	10	20,674	13,026	3,500	348	3,800	23
2013/14	3,051	921	3,800	12,909	13	16,722	10,530	3,550	292	2,350	17
2014/15	3,785	939	2,350	16,319	12	18,681	11,246	3,575	210	3,650	25
2015/16	3,268	859	3,650	12,888	33	16,571	9,153	3,450	168	3,800	30
2016/17	3,848	972	3,800	17,170	7	20,977	14,917	3,250	60	2,750	15
2017/18	4,492	1,014	2,750	20,923	3	23,676	16,281	3,225	-30	4,200	22
2018/19	4,038	990	4,200	18,367	3	22,570	14,700	2,975	-55	4,950	28
2019/20	4,650	932	4,950	19,913	3	24,866	15,300	2,150	-34	7,450	43
2020/21	3,323	957	7,450	14,608	2	22,060	16,050	2,400	-40	3,650	20
2021/22	4,153	919	3,650	17,523	5	21,178	14,050	2,550	-22	4,600	28
2022/23	2,950	1,068	4,600	14,468	2	19,070	12,450	2,050	-80	4,650	32
2023/24	2,606	1,008	4,650	12,066	2	16,718	11,750	1,850	-32	3,150	23
2024/25	3,494	885	3,150	14,201	5	17,356	11,500	1,800	-44	4,100	31

Table 11: Foreign Cotton Supply and Distribution
(1,000 HA and 1000 480-lb. Bales)

Country Mktg Year	Area Harvested	Yield	Beginning Stocks	Production	Imports	Total Supply	Exports	Domestic Use	Loss	Ending Stocks
Total Foreign										
1993/94	25,545	523	29,941	61,416	27,911	119,268	19,758	75,017	151	24,342
1994/95	26,789	539	24,342	66,272	30,320	120,934	18,616	73,264	-292	29,346
1995/96	29,435	560	29,346	75,756	26,586	131,688	19,621	75,206	-571	37,432
1996/97	28,547	541	37,432	70,872	28,161	136,465	19,737	76,725	-527	40,530
1997/98	28,347	563	40,530	73,281	25,896	139,707	19,277	75,721	-547	45,256
1998/99	28,547	548	45,256	71,902	24,021	141,179	19,209	73,957	-620	48,633
1999/00	26,908	573	48,633	70,775	27,871	147,279	20,376	80,340	-622	47,185
2000/01	26,663	582	47,185	71,261	26,166	144,612	19,416	82,851	-766	43,111
2001/02	28,187	610	43,111	78,972	29,245	151,328	18,081	86,573	-811	47,485
2002/03	25,702	622	47,485	73,421	30,084	150,990	18,500	91,020	-820	42,290
2003/04	27,037	613	42,290	76,133	34,074	152,497	19,314	91,768	-970	42,385
2004/05	30,297	706	42,385	98,270	33,910	174,565	20,513	102,316	-1,203	52,939
2005/06	29,440	691	52,939	93,498	44,621	191,058	27,249	110,577	-1,466	54,698
2006/07	29,172	737	54,698	98,812	38,266	191,776	24,457	118,990	-1,891	50,220
2007/08	28,638	764	50,220	100,458	39,439	190,117	25,234	119,306	-2,421	47,998
2008/09	27,771	761	47,998	97,040	30,534	175,572	16,946	107,087	-1,126	52,665
2009/10	27,139	730	52,665	90,988	36,931	180,584	23,768	116,034	34	40,748
2010/11	28,922	719	40,748	95,530	36,440	172,718	20,526	111,652	-100	40,640
2011/12	32,171	758	40,640	112,061	45,413	198,114	34,264	100,614	-155	63,391
2012/13	30,985	766	63,391	108,987	47,469	219,847	33,272	104,245	-825	83,155
2013/14	29,511	780	83,155	105,705	41,423	230,283	30,698	105,690	-330	94,225
2014/15	30,154	749	94,225	103,679	36,516	234,420	24,980	109,250	-2	100,192
2015/16	27,509	666	100,192	84,108	35,593	219,893	25,732	110,077	-79	84,163
2016/17	25,929	738	84,163	87,909	37,753	209,825	23,197	113,342	-124	73,410
2017/18	28,708	764	73,410	100,722	41,333	215,465	25,327	119,787	-165	70,516
2018/19	28,441	730	70,516	95,396	42,371	208,283	26,809	116,015	-75	65,534
2019/20	29,589	726	65,534	98,612	40,722	204,868	25,685	103,068	-20	76,135
2020/21	28,183	766	76,135	99,127	48,576	223,838	32,646	122,133	-100	69,159
2021/22	27,954	754	69,159	96,824	42,912	208,895	28,865	113,203	420	66,407
2022/23	28,763	772	66,407	101,995	37,645	206,047	24,327	110,590	-185	71,315
2023/24	28,744	770	71,315	101,595	43,966	216,876	33,000	112,000	-175	72,051
2024/25	27,667	806	72,051	102,437	42,471	216,959	30,971	113,938	-175	72,225